



STYLE  
2000 / 2100

---

WEAVING  
EXCELLENCE  
WITH  
INNOVATION



| Code                    | Color             | SOLAR OPTICAL PROPERTIES |    |    |    | SHGC/G VALUE<br>g-tot (glass & blind) |                    |
|-------------------------|-------------------|--------------------------|----|----|----|---------------------------------------|--------------------|
|                         |                   | TS                       | RS | AS | TV | SINGLE<br>1/4 CL                      | INSULATING<br>1 HA |
| <b>STYLE 2000 - 5%</b>  |                   |                          |    |    |    |                                       |                    |
| P02                     | White             | 20                       | 67 | 13 | 16 | 0.30                                  | 0.28               |
| P04                     | White/Bone        | 18                       | 61 | 21 | 13 | 0.32                                  | 0.30               |
| P05                     | White/Platinum    | 13                       | 49 | 38 | 11 | 0.38                                  | 0.32               |
| Q05                     | Bone              | 18                       | 55 | 27 | 12 | 0.36                                  | 0.31               |
| Q06                     | Bone/Platinum     | 12                       | 43 | 45 | 10 | 0.41                                  | 0.34               |
| Q10                     | Bronze            | 5                        | 7  | 88 | 6  | 0.59                                  | 0.44               |
| V04                     | Platinum          | 10                       | 35 | 55 | 9  | 0.45                                  | 0.37               |
| V21                     | Charcoal          | 6                        | 4  | 90 | 6  | 0.61                                  | 0.44               |
| V22                     | Charcoal/Gray     | 7                        | 9  | 84 | 7  | 0.58                                  | 0.44               |
| V24                     | Charcoal/Chestnut | 6                        | 7  | 87 | 6  | 0.59                                  | 0.44               |
| <b>STYLE 2100 - 10%</b> |                   |                          |    |    |    |                                       |                    |
| P02                     | White             | 22                       | 60 | 18 | 16 | 0.34                                  | 0.30               |
| P04                     | White/Bone        | 19                       | 54 | 27 | 14 | 0.37                                  | 0.31               |
| P05                     | White/Platinum    | 16                       | 47 | 37 | 12 | 0.40                                  | 0.33               |
| Q05                     | Bone              | 19                       | 44 | 37 | 15 | 0.42                                  | 0.35               |
| Q06                     | Bone/Platinum     | 16                       | 38 | 46 | 14 | 0.44                                  | 0.36               |
| Q10                     | Bronze            | 8                        | 5  | 87 | 9  | 0.61                                  | 0.44               |
| V04                     | Platinum          | 10                       | 31 | 59 | 9  | 0.47                                  | 0.37               |
| V21                     | Charcoal          | 9                        | 4  | 87 | 10 | 0.62                                  | 0.44               |
| V22                     | Charcoal/Gray     | 11                       | 8  | 81 | 12 | 0.60                                  | 0.44               |
| V24                     | Charcoal/Chestnut | 11                       | 6  | 83 | 12 | 0.61                                  | 0.44               |



PROTECTION THAT LIVES ON  
**MICROBAN®**

Microban® antimicrobial protection inhibits the growth of stain-causing bacteria, mold and mildew on the shade.



PRODUCT CERTIFIED FOR  
LOW CHEMICAL EMISSIONS  
UL.COM/GG  
UL 2818



TS = Solar Transmittance  
RS = Solar Reflectance  
AS = Solar Absorptance  
TV = Visual Transmittance

SHGC = Solar Heat Gain Coefficient

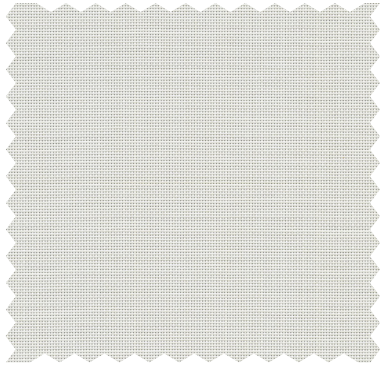
1/4 CL = 1/4" Clear Glass  
1 HA = 1" Heat Absorbing Glass

Fabrics Installed Internally  
Zero-Degree Profile Angle

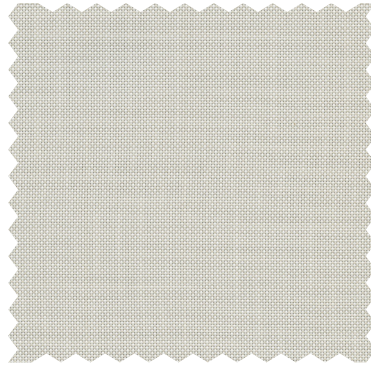
For additional performance values,  
test references and technical  
definitions visit us at [phifer.com](http://phifer.com).



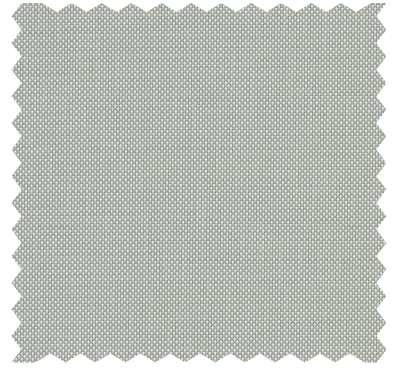
P02 **White**



P04 **White/Bone**



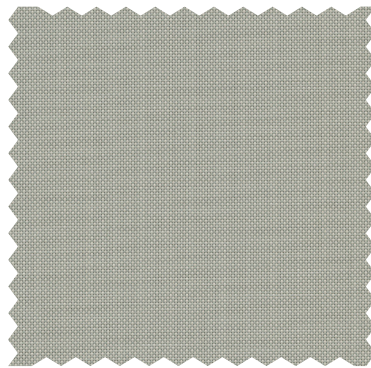
P05 **White/Platinum**



Q05 **Bone**



Q06 **Bone/Platinum**



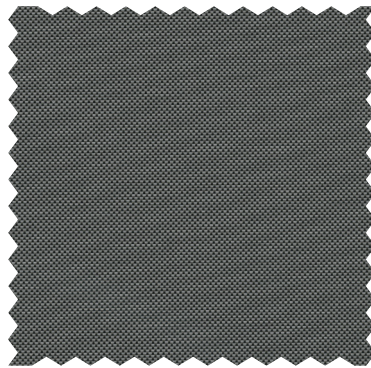
V04 **Platinum**



Q10 **Bronze**



V22 **Charcoal/Gray**



V24 **Charcoal/Chestnut**



V21 **Charcoal**



# STYLE 2000/ 2100 SPECIFICATIONS

The original SheerWeave fabrics, Styles 2000 and 2100 are vinyl coated fiberglass basketweaves designed expressly for those applications that require a more opaque and non-directional fabric. Styles 2000 and 2100 can also be used in exterior shading systems.

|                            |  |                                      |
|----------------------------|--|--------------------------------------|
| <b>FIRE CLASSIFICATION</b> | NFPA 101 (Class A Rating)              | CAN/CGSB2-4.162-M80                  |
|                            | California U.S. Title 19 (small scale) | NFPA 701 TM#1 (small scale)          |
|                            | BS 5867 Part 2 Type B Performance      | NFPA 701 TM#2 (large scale)          |
|                            | CAN/ULC-S 109 (large and small scale)  | IBC Section 803.1.1 (Class A Rating) |

*Fire classifications are subject to change. Please go to [phifer.com](http://phifer.com) for the most current information.*

|                                       |   |          |          |                |             |
|---------------------------------------|---|----------|----------|----------------|-------------|
| <b>BACTERIA AND FUNGAL RESISTANCE</b> | ASTM E 2180   | ASTM G21 | ASTM G22 | AATCC30 Part 3 | ASTM D 3273 |
|                                       | GREENGUARD Mold and Bacteria Standard ASTM 6329 includes Microban antimicrobial additives |          |          |                |             |

|                                    |  |                 |
|------------------------------------|--|-----------------|
| <b>ENVIRONMENTAL CERTIFICATION</b> | GREENGUARD   | GREENGUARD Gold |
|                                    | Certified to these standards for low chemical emissions into indoor air during product usage |                 |

|                 |   |                 |
|-----------------|---|-----------------|
| <b>SAFE USE</b> | RoHS Compliant  | REACH Compliant |
|                 | ANSI/WCMA A 100.1-2007 for lead content US Consumer Product Safety Commission Section 101 |                 |

|                 |                  |                 |
|-----------------|------------------|-----------------|
| <b>WARRANTY</b> | 10-year interior | 5-year exterior |
|-----------------|------------------|-----------------|

**UV PROTECTION** SheerWeave sun control fabrics are an effective way to reduce harmful UV rays. Phifer Incorporated is a proud member of the Skin Cancer Foundation's Corporate Council.

**TRACKLESS** TrackLess Technology minimizes the fiberglass yarns' inherent tendencies to track when being rolled up in a shade. With TrackLess Technology these same fabrics now track less, roll up straighter and reduce shade fabrication time.

| STYLE                   | 2000   | 2100  |
|-------------------------|--|---|
| <b>WIDTHS</b>           | 63", 98" and 126"<br>160 cm, 248.9 cm and 320 cm | 63", 98"<br>160 cm, 248.9 cm                    |
| <b>ROLL LENGTH</b>      | 30 Linear Yards<br>27.4 Linear Meters            | 30 Linear Yards<br>27.4 Linear Meters           |
| <b>COMPOSITION</b>      | 37% Fiberglass<br>63% Vinyl on Fiberglass        | 37% Fiberglass<br>63% Vinyl on Fiberglass       |
| <b>MESH WEIGHT</b>      | 14.4 oz/yd <sup>2</sup><br>488 g/m <sup>2</sup>  | 12.9 oz/yd <sup>2</sup><br>437 g/m <sup>2</sup> |
| <b>FABRIC THICKNESS</b> | 0.021 in<br>0.53 mm                              | 0.021 in<br>0.53 mm                             |
| <b>OPENNESS FACTOR</b>  | Approximately 5%                                 | Approximately 10%                               |
| <b>UV BLOCKAGE</b>      | Approximately 95%                                | Approximately 90%                               |
| <b>ACOUSTICAL VALUE</b> | NRC .10 / SAA .11                                | NRC .05 / SAA .06                               |

**PHIFER**  
INCORPORATED

P. O. Box 1700 • Tuscaloosa, Alabama 35403-1700 USA  
Phone: 205.345.2120 • FAX: 205.391.0799  
Toll Free USA/Canada: 1.800.221.5497  
[phifer.com](http://phifer.com) • ISO Registered



© SheerWeave is a registered trademark of PHIFER INCORPORATED.  
© MICROBAN is a registered trademark of Microban Products Company.  
™ UL, the UL logos and the UL mark are trademarks of UL LLC.  
Photo courtesy of Draper INC., Spiceland, Indiana, USA.  
© PHIFER INCORPORATED V20 061923 3033831